

Too Much or Too Little: How to Right-size Hardware

*Jeff Schultz
TeamQuest Corporation*

Why is right-sizing hardware so important?

- Failing to make sure your IT infrastructure is the right size for your business has a negative affect on profitability.
- Fortune 200 Insurance Company saves \$12 M in twelve months.
- Large Military Data Center saved \$1M in two weeks

- Suffer poor response
- Low productivity
- Lost business \$\$\$\$

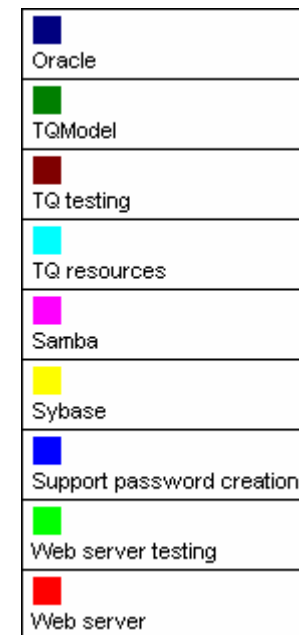
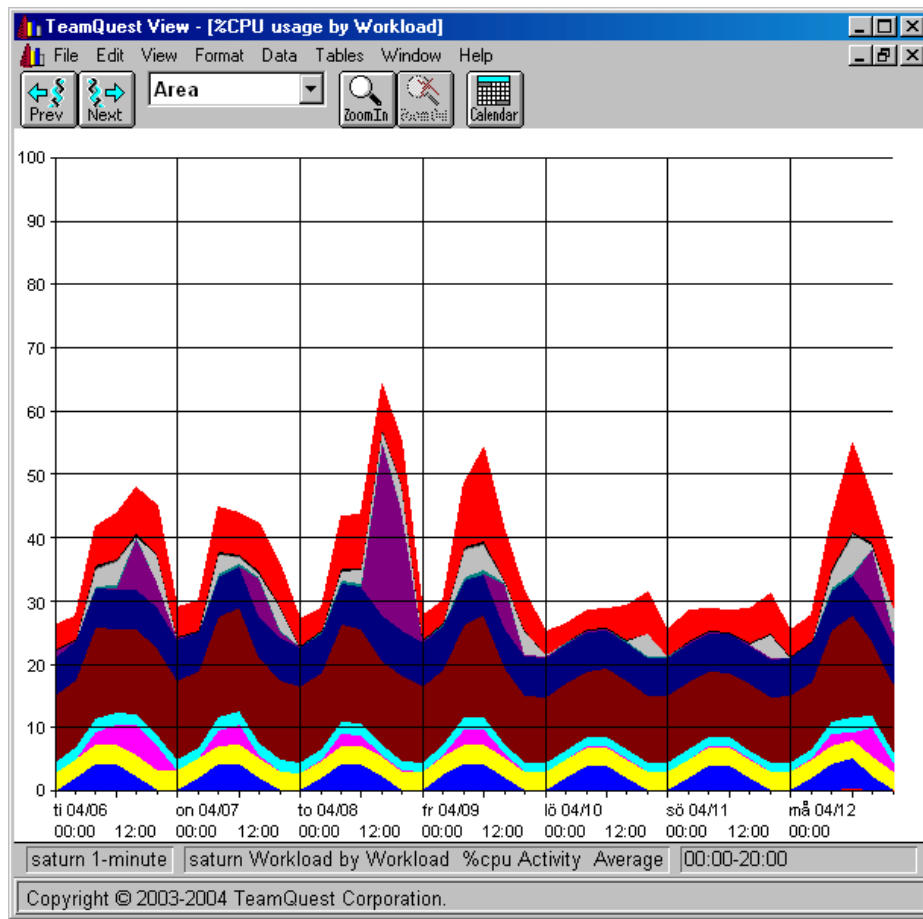
- Unnecessarily increase complexity
- Decrease manageability
- Waste both time and money

TeamQuest Software Addresses Right-sizing

- TeamQuest software provides you with objective, accurate data for justifying and right-sizing hardware and software purchases.
 - Understand the current environment
 - Plan for the future
 - Configure alternatives

- Used for day-to-day monitoring of existing systems.
- Enables you to do in-depth analysis of resource utilization
- Correlation analysis
- Workload trends
 - Online and batch processing
 - Application utilization

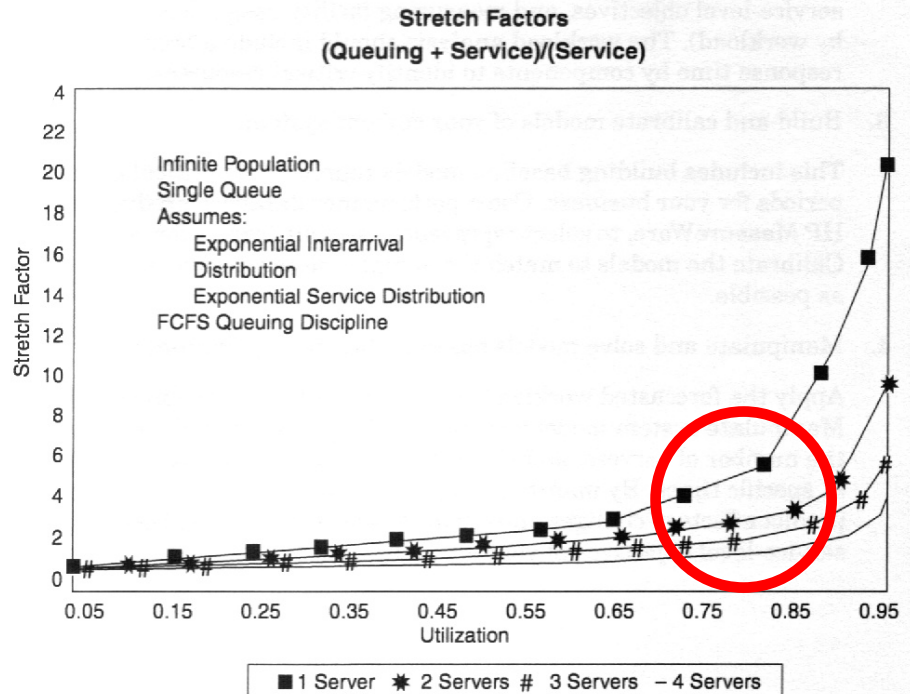
Application Utilization

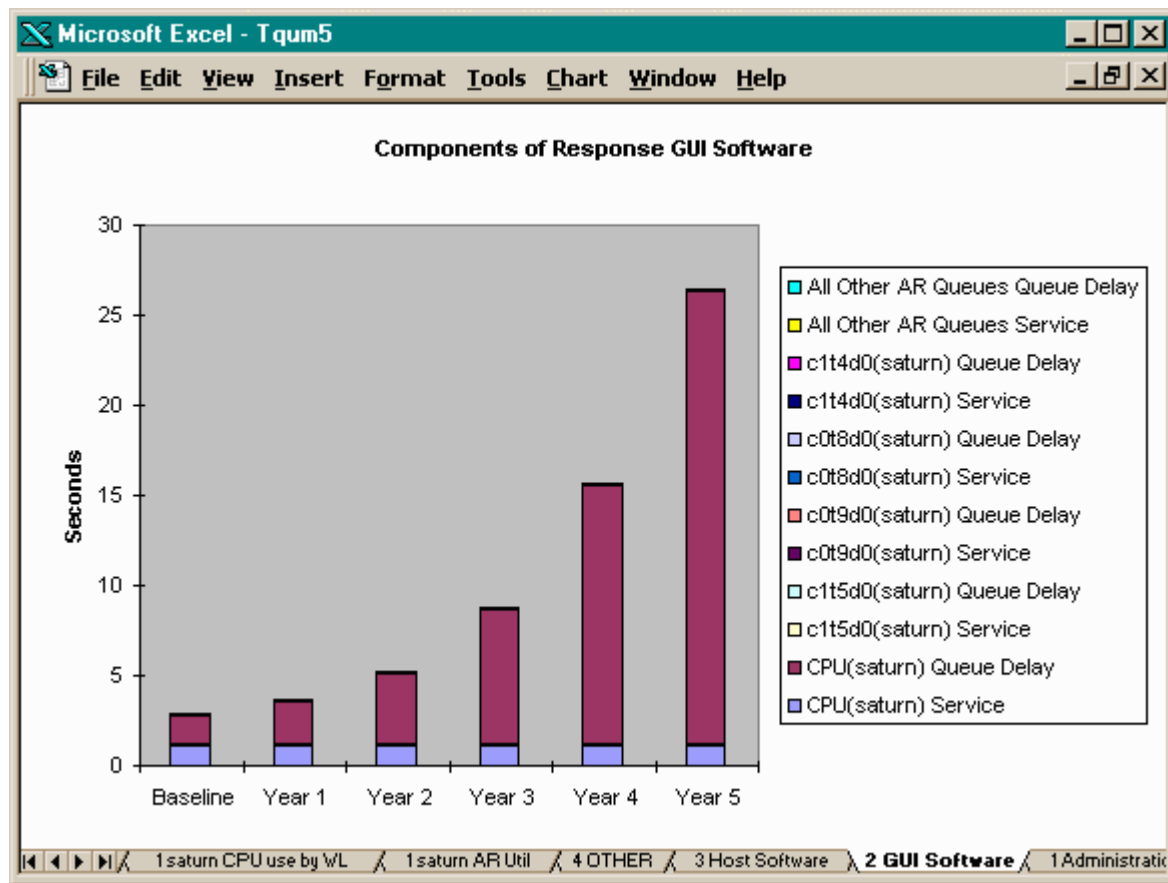


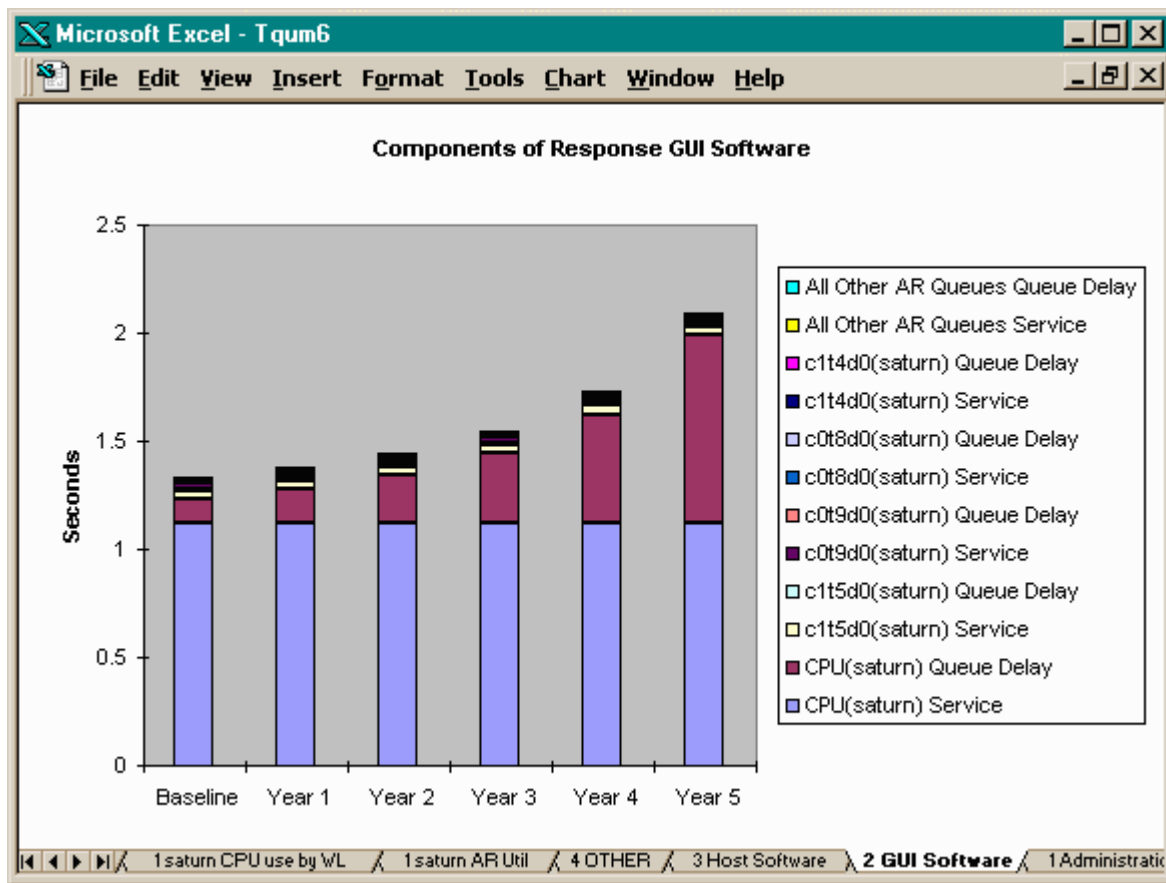
- **TeamQuest Model is used to maximize the utilization of your Computing Enterprise**
 - **Identify Current Resource Constraints**
 - **Server Consolidation**
 - **Multi-Tier Modeling**
 - **Identify Under-Utilized Resources**
 - **Failover Planning**
- **Align IT with business demands**
- **Meet Service Level Agreements**
- **Plan and budget system upgrades**
- **Reduce software license fees**

Stretch Factors

- In the simplest terms, modeling is about finding the point where the server starts to slow down.
- This state occurs when the Stretch Factor reaches 2 in TeamQuest Model.
- Stretch Factor is a general indication of the performance of the server.
- At Stretch Factor 2 the performance of the server starts to degrade exponentially.

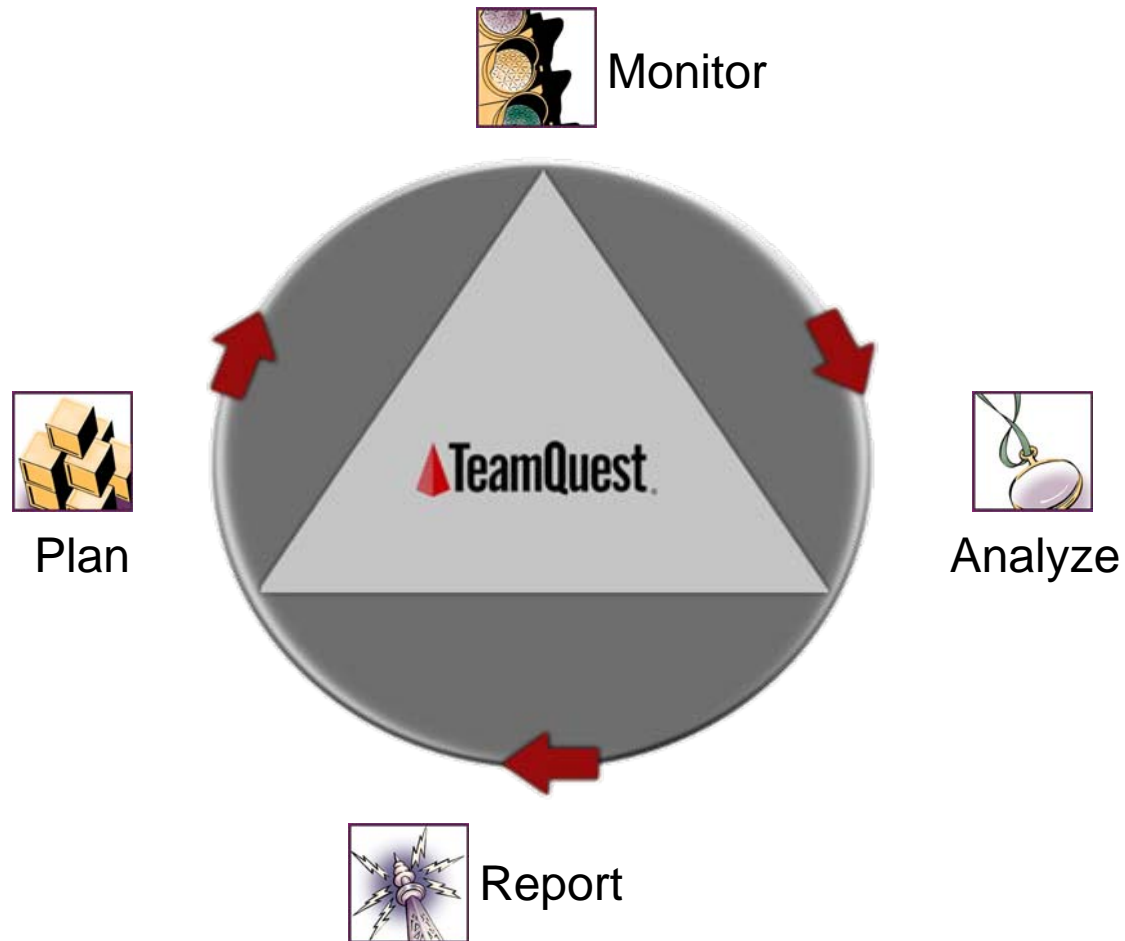






Right-Sizing is a Continuous Process

Complete Solution for Performance Management and Capacity Planning



Thank you for attending.

**Please close this presentation
and proceed to the Q & A
Bulletin Board and survey.**